

GloveBox

Budget soda blasting cabinet

Soda blasting system with unique professional features. Effective blasting and cleaning method with a wide variety of applications.



The GloveBox Budget is a blasting and cleaning system built according to our high industrial standards.

The used components and its unique design make it the perfect system for professional blasting and cleaning jobs.

Technique

The GloveBox is specially designed for the cleaning or depainting of delicate objects with soda blasting media. Because of the softness and friability of soda it will disintegrate on impact without damage to or distortion of the substrate.

Soda media can therefore be used only once and creates (in comparison with other abrasives) a heavy dustload. The GloveBox is one of the very few systems capable of working under these conditions. The special filter unit guarantees good visibility inside the cabinet.

The difference with our high-production models is that the GloveBox Budget is designed for a couple of hours of soda blasting per week.

Features

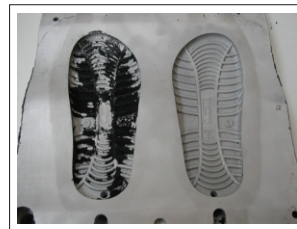
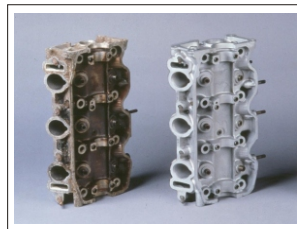
GloveBox cabinet with a blast hose & nozzle, a blow off gun, a large access door, foot pedal control for soda blasting unit and a large window with 'inlet air-knife' for good visibility.

Filter unit with 5 m² cartridge surface which is executed with automatic reverse air pulse cleaning for problem free operation.

The GloveBox can be delivered with our unique soda blasting unit for the constant and precise delivery of the soda blasting media.

Soda blasting media

With soda blasting media objects can be treated without any distortion of the surface. Applications are numerous in the off-shore, petrochemical and food industry, engine overhaul, mould cleaning and much more...



Large window and clear lighting inside

Strong extraction unit



Air inlet knife avoids dust at the window



Timer controlled solenoid for automatic filter cleaning (air pulse)

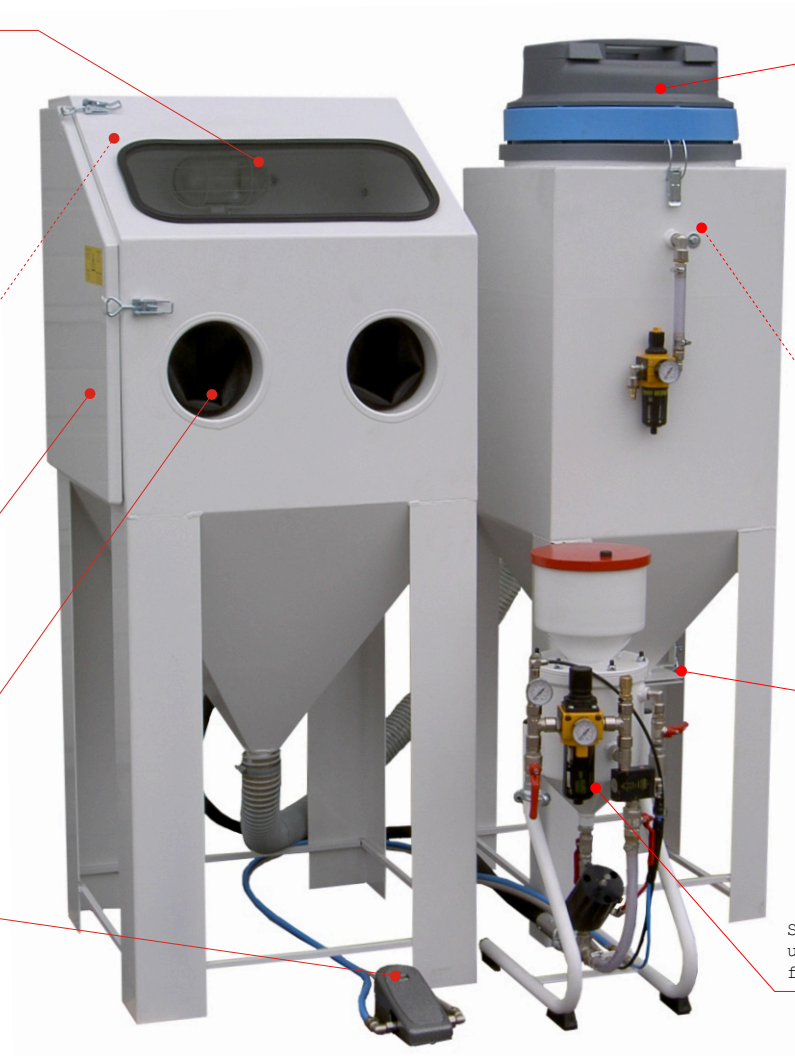
Large access door

Sturdy rubber gloves

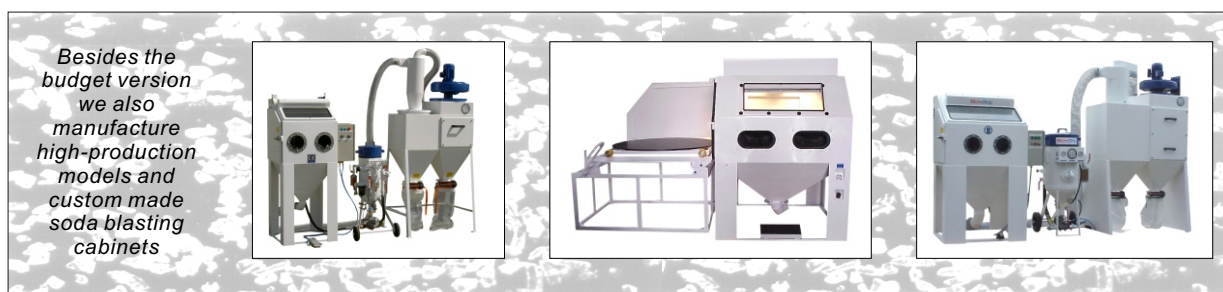
Foot pedal control

Large hatch for easy dust disposal

Soda blasting unit with the unique self closing Mini-Valve for the most accurate metering



	Cabinet	Filter unit	Soda blaster
Overall:	690 x 640 x 1530 mm	Length: 605 mm	Length: 400 mm
Blast room:	600 x 600 x 600/430	Width: 450 mm	Width: 250 mm
Door:	500 x 550/370 mm	Height: 1650 mm	Height: 770 mm
Max. load:	25 kg	Power: 2500 W	Weight: 17 kg
Lighting:	15 W, 950 lumen	Connection: 240 V, 1 ph, 50 Hz	Contents: 7 litres
Connection:	240 V, 1 ph, 50 Hz	Compressed air: 25 l/pulse (2x/min)	Nozzle: 4 mm
Extra:	blow off gun	Filter surface: 5 m ²	Compressed air: 740 l/min (max)



Besides the budget version we also manufacture high-production models and custom made soda blasting cabinets